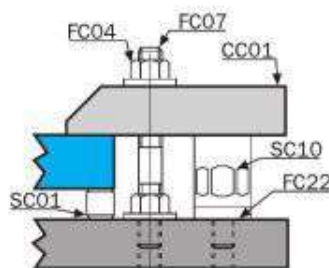
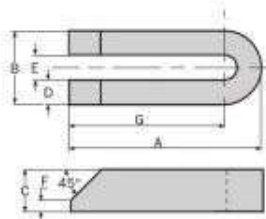


## INDEXA CC01 - U-Clamp

Open end permits quick and easy installation.



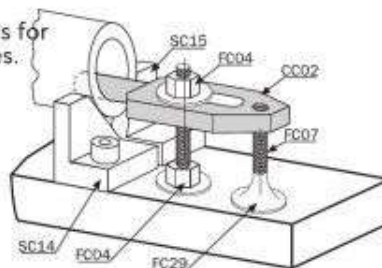
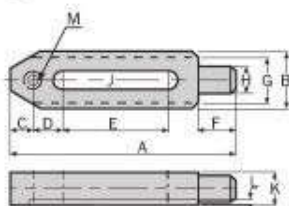
**Material:** Medium Carbon Steel.  
**Heat treated to:** HRC 32 - 38.  
**Surface finish:** Black Oxide.



Product Number	Length x Width A x B	Dimensions (mm)					Weight each	Order Code
		C	D	E	F	G		
CC010112	100 x 38mm	22	12.5	13	6	81	0.41kg	IND-425 -1005D
CC010316	150 x 50mm	30	16.5	17	8	125	1.10kg	-1005J
CC010420	200 x 60mm	35	19.5	21	10	170	2.10kg	-1005M

## CC02 - Bore Clamp

The cylindrical pin minimises the contact area. This clamp is for clamping inside horizontal bores and onto concave surfaces.



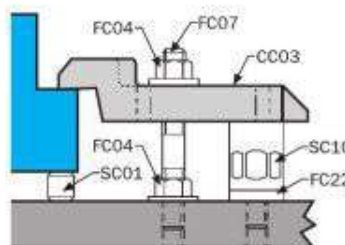
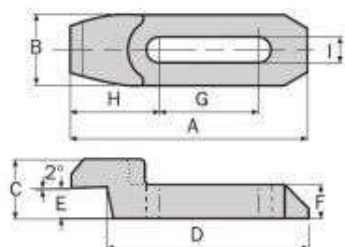
**Material:** Medium Carbon Steel.  
**Heat treated to:** HR C32 - 38.  
**Surface finish:** Black Oxide.



Product Number	Length x Width A x B	Dimensions (mm)										Weight each	Order Code
		C	D	E	F	G	H	J	K	L	M		
CC020112	150 x 38mm	15	20	70	25	30	18	13	22	4	M12	0.58kg	IND-425 -1010D
CC020216	150 x 48mm	20	25	40	35	40	24	17	32	5	M16	1.12kg	-1010G

## CC03 - Swan Necked Clamp

Low profile design helps eliminate cutter interference.



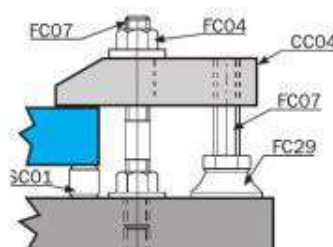
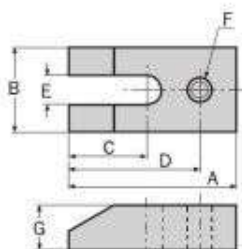
**Material:** Medium Carbon Steel.  
**Heat treated to:** HRC 32 - 38.  
**Surface finish:** Black Oxide.



Product Number	Length x Width A x B	Dimensions (mm)							Weight each	Order Code
		C	D	E	F	G	H	I		
CC030112	120 x 36mm	30	102	16	17	50	45	13	0.49kg	IND-425 -1015H
CC030216	150 x 48mm	48	130	25	25	55	60	17	1.30kg	-1015K
CC030320	175 x 60mm	60	150	30	30	65	70	21	2.26kg	-1015N

## CC04 - Tapped End U-Clamp

Open end design permits easy assembly.

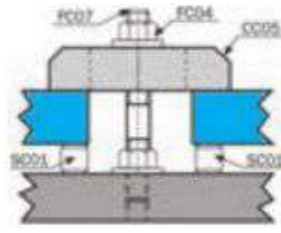
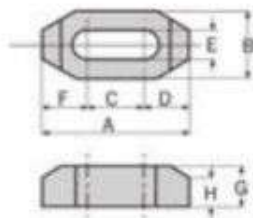


**Material:** Medium Carbon Steel.  
**Heat treated to:** HRC 32 - 38.  
**Surface finish:** Black Oxide.



Product Number	Length x Width A x B	Dimensions (mm)					Weight each	Order Code
		C	D	E	F	G		
CC040616	150 x 50mm	95	130	17	M16	25	1.50kg	IND-425 -1020R

**INDEXA** CC05 - Plain Clamp



**Material:** Medium Carbon Steel.  
**Heat treated to:** HRC 32 - 38.  
**Surface finish:** Black Oxide.

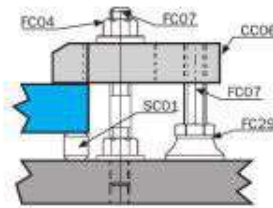
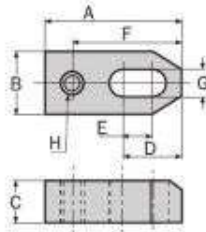


Product Number	Length x Width A x B	Dimensions (mm)						Weight each	Order Code
		C	D	E	F	G	H		
CC050112	65 x 32mm	25	20.0	13	20.0	19	13	0.22kg	IND-425 -1025D
CC050212	100 x 32mm	40	30.0	13	30.0	19	13	0.33kg	-1025G
CC050316	80 x 38mm	24	28.0	17	28.0	22	14	0.34kg	-1025J
CC050416	125 x 38mm	41	42.0	17	42.0	22	14	0.57kg	-1025M
CC050520	100 x 38mm	32	34.0	21	34.0	22	14	0.41kg	-1025P
CC050620	125 x 38mm	40	42.5	21	42.5	25	15	0.62kg	-1025R

Order Code  
**IND-425**

**CC06 - Tapped End Plain Clamp**

For use with various knobs, jack screws, clamps and pads.



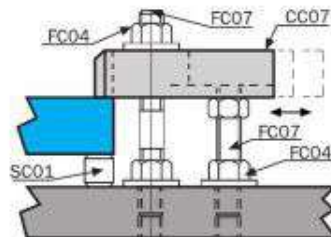
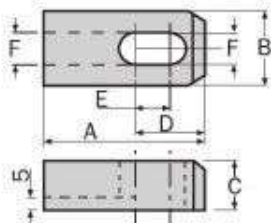
**Material:** Medium Carbon Steel.  
**Heat treated to:** HRC 32 - 38.  
**Surface finish:** Black Oxide.



Product Number	Length x Width A x B	Dimensions (mm)						Weight each	Order Code
		C	D	E	F	G	H		
CC060112	65 x 32mm	19	32	14	52	13	M12	0.22kg	IND-425 -1030D
CC060212	80 x 32mm	19	48	25	69	13	M12	0.27kg	-1030F
CC060312	100 x 32mm	19	60	40	89	13	M12	0.33kg	-1030H
CC060416	80 x 38mm	19	40	17	65	17	M16	0.32kg	-1030J
CC060516	100 x 38mm	25	55	30	85	17	M16	0.53kg	-1030L
CC060616	125 x 38mm	25	70	45	110	17	M16	0.65kg	-1030N
CC060720	150 x 50mm	25	82	50	134	21	M20	1.10kg	-1030P
CC060820	200 x 50mm	25	112	80	184	21	M20	1.90kg	-1030R

Order Code  
**IND-425**

**CC07 - Slotted End Clamp**



**Material:** Medium Carbon Steel.  
**Hardness:** HRC 32 - 38.  
**Surface finish:** Black Oxide.

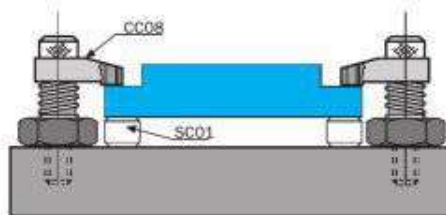
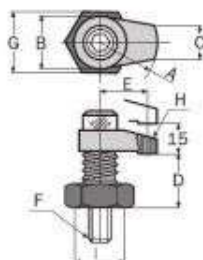


Product Number	Length x Width A x B	Dimensions (mm)				Weight each	Order Code
		C	D	E	F		
CC070212	80 x 32mm	22	48	25	13	0.31kg	IND-425 -1035F
CC070616	125 x 38mm	25	70	45	17	0.65kg	-1035N

Order Code  
**IND-425**

**CC08 - Swing Clamp**

A small clamp with good holding power, ideal for tight spaces, full swing away feature permits easy part loading.



**Material:** Case Hardened Steel.  
**Hardness:** HRC 38 - 42.  
**Surface finish:** Black Oxide.



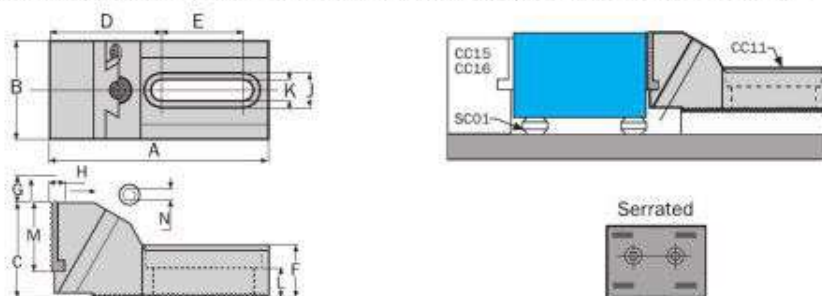
Product Number	Length x Width A x B	Dimensions (mm)						Weight each	Order Code
		C	D	E	F	G	H	I	
CC080112	30 x 28mm	16	40	-	M12	29	-	21	0.29kg
CC080212	50 x 32mm	20	45	40	M12	36	M12	26	0.50kg
CC080316	60 x 40mm	25	45	45	M16	41	M16	32	0.75kg

Order Code  
**IND-425**



## INDEXA CC11 - Free Vice Jaw

Clamping force in two directions, with serrated jaws for holding large or irregular shapes.



**Material:** Body: Grey Cast Iron.  
Jaw: Medium Carbon Steel EN8D.  
**Hardness:** Jaw Only: HRC 45 - 48.  
**Surface finish:** Jaw: Black Oxide.

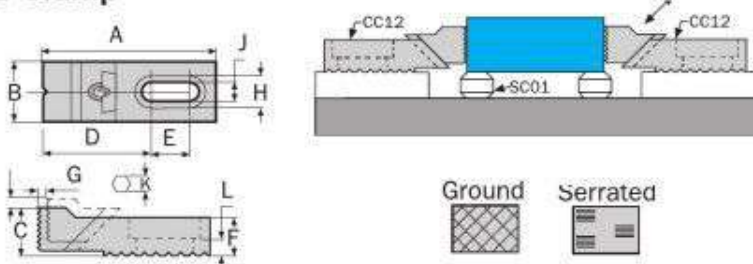


Metalworking

Product Number	Type	Length x Width A x B	Dimensions (mm)											Weight each	Order Code
			C	D	E	F	G	H	J	K	L	M	N		
CC110112	Serrated	133 x 60mm	54.5	68	50	32	16	6	22	13	16.8	42	10	2.0kg	-1045D

## CC12 - Adjustable Clamp

Low profile clamp that keeps top surfaces clear for machining. Ideal for rough or finished parts.



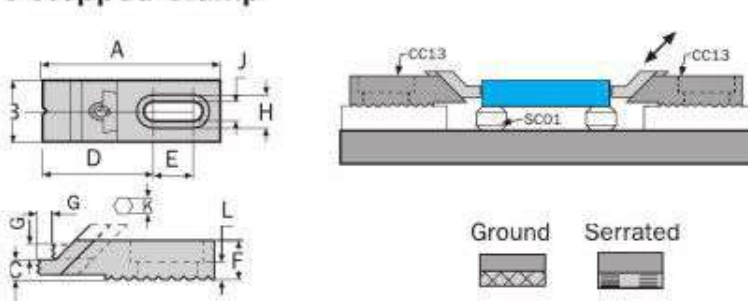
**Material:** Medium Carbon Steel.  
**Hardness:** Jaw Only: HRC 38.  
**Surface finish:** Black Oxide.  
**Jaws:** Surface treated with high frequency quenching.



Product Number	Type	Length x Width x Height A x B x C	Dimensions (mm)										Weight each	Order Code
			D	E	F	G	H	J	K	L				
CC120108	Serrated	73.45 x 25 x 18mm	46.95	16.5	16	7	14	8.5	4	7		0.18kg	-1050D	
CC120212		106.64 x 35 x 27.5mm	62.14	30.0	22	12	20	13.5	6	9		0.52kg	-1050F	
CC120316		134.64 x 40 x 37.5mm	82.14	35.0	30	14	26	17.0	8	13		1.02kg	-1050H	
CC120408	Ground	72.00 x 25 x 20.0mm	45.00	16.0	16	7	14	8.5	4	7		0.16kg	-1050J	
CC120512		104.64 x 35 x 27.5mm	62.14	30.0	22	12	20	13.5	6	9		0.52kg	-1050M	
CC120616		134.64 x 40 x 37.5mm	82.14	35.0	30	14	26	17.0	8	13		1.02kg	-1050R	

## CC13 - Adjustable Stepped Clamp

Low profile clamp for holding thin parts and keeping top surfaces clear for machining.

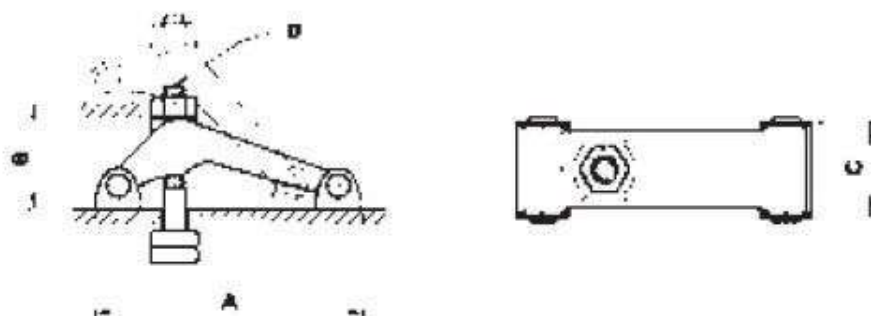


**Material:** Medium Carbon Steel.  
**Heat treated to:** HRC 38.  
**Surface finish:** Black Oxide.  
**Jaws:** Surface treated with high frequency quenching.



Product Number	Type	Length x Width x Height A x B x C	Dimensions (mm)										Weight each	Order Code
			D	E	F	G	H	J	K	L				
CC130108	Serrated	73.45 x 25 x 18mm	46.95	16.5	16.5	7	14	8.5	5	7		0.18kg	-1055D	
CC130212	Ground	106.64 x 35 x 27.5mm	64.14	30.0	22.0	12	20	13.5	6	9		0.52kg	-1055F	
CC130316		133.14 x 40 x 14mm	90.00	30.0	30.0	14	26	17.0	8	13		0.85kg	-1055H	

## CC19 - Forged Swivel Clamp



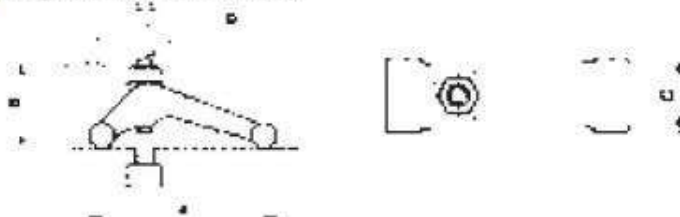
**Material:** Medium Carbon Steel/Steel Forging.  
**Heat treated to:** 32 - 38°.  
**Surface finish:** Black Oxide.



Product Number	Length x Width A x B	Dimensions (mm)		Weight each	Order Code
		C	D		
CC19-NC50	131 x 75mm	46.5	M12-125	1.50kg	-1085D

**INDEXA**

**CC20 - Forged Swivel Clamp**

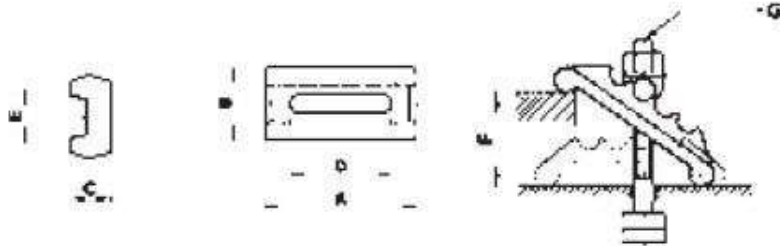


**Material:** Medium Carbon Steel/Steel Forging.  
**Heat treated to:** 32 - 38°.  
**Surface finish:** Black Oxide.

Product Number	Length x Width A x B	Dimensions (mm)		Weight each
		C	D	
CC20-NC6	150 x 85mm	52	M16-150	2.42kg
CC20-NC8	194 x 105mm	58	M20-175	4.50kg

Order Code  
**IND-425**  
 -1090M  
 -1090T

**CC21 - Swivel Rack Clamp**

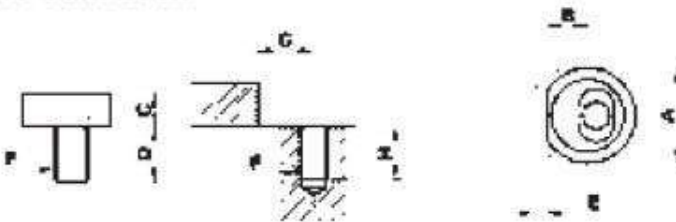


**Material:** Medium Carbon Steel/Steel Forging.  
**Surface finish:** Black Oxide.

Product Number	Length x Width A x B	Dimensions (mm)					Weight each
		C	D	E	F	G	
CC21-0216	125 x 56mm	33	84	18	65	M16	2.10kg

Order Code  
**IND-425**  
 -1095M

**CC24 - Eccentric Cam Lock**

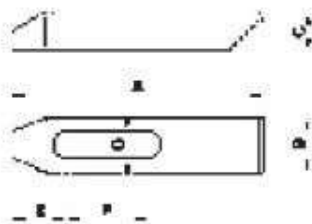


**Material:** Medium Carbon Steel.  
**Hardness:** HRC 35.  
**Surface finish:** Black Oxide.

Product Number	Dimensions (mm)								Weight each
	A	B	C	D	E	F	G	H	
CC240210	26	11.8	8	14.3	4	M10	12.5	22	.03kg
CC240312	30	13.5	9	19	5	M12	14.5	22	.06kg
CC240416	38	16.0	12	23	6	M16	17.5	26	.12kg

Order Code  
**IND-425**  
 -1110C  
 -1110G  
 -1110P

**CC25 - Step Clamp**

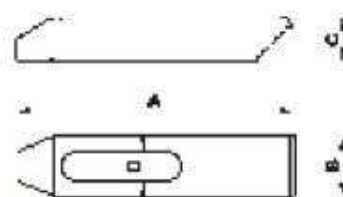


**Material:** Medium Carbon Steel.  
**Hardness:** HRC 32 - 38.  
**Surface finish:** Black Oxide.

Product Number	Length x Width A x B	Dimensions (mm)					To Suit Stud Size	Weight each
		C	D	E	F			
CC251463	63 x 25mm	13	15	20	14	M14	0.12kg	
CC2514100	100 x 32mm	19	15	29	34	M14	0.38kg	
CC2514150	150 x 32mm	22	15	32	50	M14	0.68kg	
CC2516100	100 x 32mm	19	17	31	26	M16	0.42kg	
CC2516150	150 x 30mm	22	17	40	47	M16	0.72kg	

Order Code  
**IND-425**  
 -1130C  
 -1130G  
 -1130J  
 -1135G  
 -1135J

**ATLAS WORKHOLDERS Step Clamp**



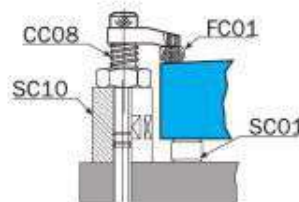
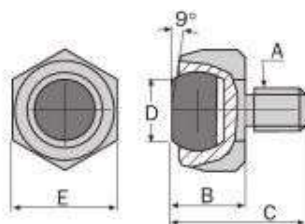
**Material:** Medium Carbon Steel.  
**Hardness:** HRC 32 - 38.  
**Surface finish:** Black Oxide.

Product Number	To Suit Stud Size	Dimensions (mm)				Order Code ATL-425	Product Number	To Suit Stud Size	Dimensions (mm)				Order Code ATL-425
		A	B	C	D				A	B	C	D	
SC105222		55	25	12	13	-2020K	SC146428		64	28	12	15	-2220K
SC108825	M10/3/8" UNC	88	25	16	11	-2040K	SC1410035	M14	100	35	19	15	-2240K
SC1012828		128	28	19	11	-2060K	SC1415032		150	32	22	15	-2260K
SC126428		64	28	12	13	-2120K	SC166432		64	32	12	17	-2420K
SC1210032	M12/1/2" UNC	100	32	19	13	-2140K	SC1610038	M16/3/8" UNC	100	38	20	17	-2440K
SC1215032		150	32	22	13	-2160K	SC1615038		150	38	22	17	-2460K



## INDEXA FC01 - Plain Ball End

Precision swivel ball that can be used either as a contact bolt or rest pad. As contact pads these swivel ball units are ideal for evenly distributing clamping pressure on sloped or uneven surfaces.



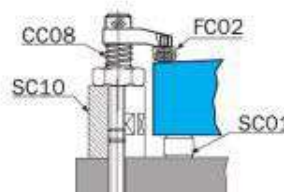
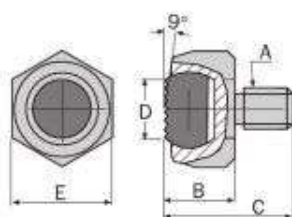
**Material:**  
 Body - Medium Carbon Steel.  
 Ball - Through Hardened Steel EN 31.  
**Hardness:**  
 Bolt - HRC 35.  
 Ball - HRC 62.  
**Surface finish:**  
 Black Oxide.



Product Number	Thread A	Dimensions (mm)				Weight each	Order Code
		B	C	D	E		
FC010216	M16 x 2.00	26	42	14	27	0.14kg	IND-425 -2010R

## FC02 - Serrated Ball End

Precision swivel ball that can be used either as a contact bolt or rest pad. As contact pads these swivel ball units are ideal for evenly distributing clamping pressure on sloped or uneven surfaces.

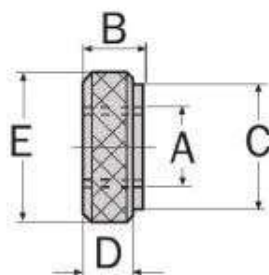


**Material:**  
 Body - Medium Carbon Steel.  
 Ball - Through Hardened Steel EN 31.  
**Hardness:**  
 Bolt - HRC 35.  
 Ball - HRC 62.  
**Surface finish:**  
 Black Oxide.



Product Number	Thread A	Dimensions (mm)				Weight each	Order Code
		B	C	D	E		
FC010112	M12 x 1.75	22	35	12	22	0.070kg	IND-425 -2015J
FC010216	M16 x 2.00	26	42	14	27	0.14kg	IND-425 -2015R

## FC03 - Knurled Nut

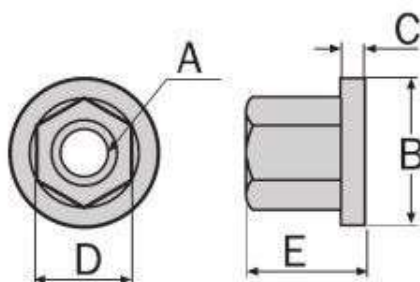


**Material:** Medium Carbon Steel.  
**Hardness:** HRC 30 - 35.  
**Surface finish:** Black Oxide.



Product Number	Thread A	Dimensions (mm)				Weight each	Order Code
		B	C	D	E		
FC030210	M10	10	20	8	25	0.030kg	IND-425 -2020K
FC030416	M16	12	25	10	30	0.045kg	IND-425 -2020R

## FC04 - Flanged Nut



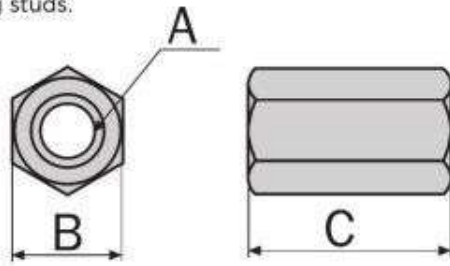
**Material:** Medium Carbon Steel.  
**Hardness:** HRC 30 - 35.  
**Surface finish:** Black Oxide.



Product Number	Thread A	Dimensions (mm)				Weight each	Order Code
		B	C	D	E		
FC040110	M10	22	3	17	13	0.020kg	IND-425 -2025G
FC040212	M12	28	4	19	17	0.040kg	IND-425 -2025K
FC040214	M14	28	4	22	17	0.040kg	IND-425 -2025M
FC040316	M16	33	5	24	20	0.060kg	IND-425 -2025P
FC040420	M20	40	6	30	25	0.110kg	IND-425 -2025T

**FC05 - Extension Nut**

Extends the length of clamping studs.

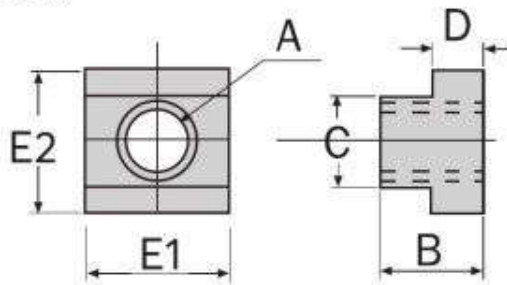


**Material:** Medium Carbon Steel.  
**Hardness:** HRC 30 - 35.  
**Surface Finish:** Black Oxide.



Product Number	Size A	Dimensions (mm)		Weight each	Order Code IND-425
		B	C		
FC050110	M10	17	30	0.030kg	-2030F
FC050212	M12	19	36	0.046kg	-2030K
FC050314	M14	22	42	0.065kg	-2030M
FC050316	M16	24	48	0.110kg	-2030N
FC050420	M20	30	60	0.220kg	-2030R

**FC06 - T-Slot Nut (Milled)**

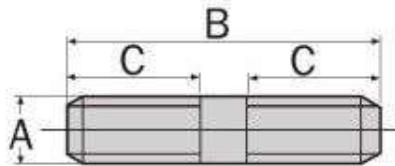


**Material:** Medium Carbon Steel.  
**Hardness:** HRC 30 - 35.  
**Surface finish:** Black Oxide.



Product Number	Size A	Dimensions (mm)				Weight each	Order Code IND-425	
		B	C	D	E1			E2
FC060110	M10	14.0	11.8	7.0	22	18.0	0.022kg	-2035G
FC060212	M12	16.0	13.8	8.0	28	22.0	0.048kg	-2035K
FC050314	M14	16.0	15.8	8.0	28	25.0	0.057kg	-2035M
FC060316	M16	20.0	17.7	10.5	30	28.5	0.085kg	-2035P
FC060420	M20	25.0	22.0	14.0	38	36.0	0.190kg	-2035T

**FC07 - Engineer's Stud**



**Material:** Medium Carbon Steel.  
**Hardness:** HRC 30 - 35.  
**Surface finish:** Black Oxide.

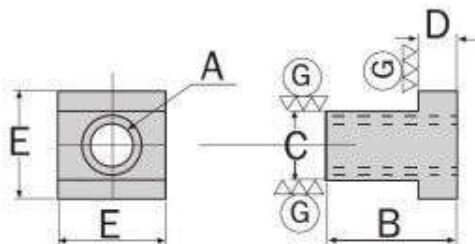


Product Number	Size A x B	Dimension C (mm)	Weight each	Order Code IND-425
FC070110	M10 x 50mm	22	30g	-2120S
FC070210	M10 x 75mm	30	42g	-2125S
FC070310	M10 x 100mm	38	55g	-2130S
FC070510	M10 x 150mm	50	90g	-2140S
FC070612	M12 x 50mm	22	40g	-2145S
FC070712	M12 x 75mm	30	60g	-2150S
FC070812	M12 x 100mm	38	80g	-2155S
FC070912	M12 x 125mm	38	100g	-2160S
FC071012	M12 x 150mm	50	125g	-2165S
FC071112	M12 x 200mm	65	160g	-2170S
FC071212	M12 x 300mm	80	240g	-2175S
FC071214	M14 x 75mm	30	65g	-2176S
FC071214	M14 x 100mm	38	85g	-2177A
FC071214	M14 x 125mm	38	105g	-2177G
FC071214	M14 x 150mm	50	130g	-2177K
FC071214	M14 x 200mm	65	165g	-2177T
FC071316	M16 x 75mm	20	120g	-2180S
FC071416	M16 x 100mm	38	145g	-2185S
FC071516	M16 x 125mm	38	180g	-2190S
FC071616	M16 x 150mm	50	230g	-2195S
FC071616	M16 x 175mm	50	240g	-2197S
FC071716	M16 x 200mm	65	290g	-2200S
FC071816	M16 x 250mm	65	350g	-2205S
FC071916	M16 x 300mm	80	450g	-2210S
FC072016	M16 x 400mm	100	580g	-2215S
FC072116	M16 x 500mm	100	700g	-2220S
FC072220	M20 x 75mm	30	170g	-2225S
FC072320	M20 x 100mm	38	230g	-2230S
FC072420	M20 x 125mm	38	280g	-2235S
FC072520	M20 x 150mm	50	360g	-2240S
FC072620	M20 x 200mm	65	450g	-2245S
FC072720	M20 x 250mm	65	550g	-2250S
FC072820	M20 x 300mm	80	700g	-2255S
FC072920	M20 x 400mm	100	880g	-2260S
FC073020	M20 x 500mm	100	1100g	-2265S



## INDEXA FCO8 - T-Slot Nut (Ground)

Ground surfaces provide accurate positioning inside of T-slot.



Material: Medium Carbon Steel.  
Hardness: HRC 30 - 35.

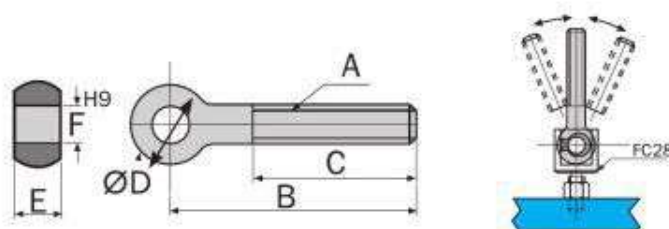


Product Number	Thread A	Dimensions (mm)				Weight each
		B	C (h6)	D	E	
FC008112	M12	22	14	8	22	45g
FC008216	M16	30	18	10	28	80g

Order Code  
IND-425  
-2505J  
-2505R

## FC09 - Swing Bolt

Reamed hole for smooth swivelling.



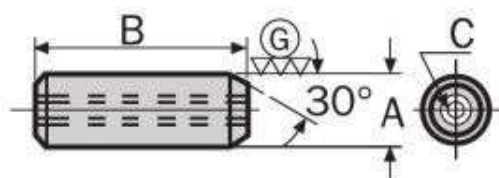
Material: Medium Carbon Steel.  
Hardness: HRC 30 - 35.



Product Number	Size A x B	Dimensions (mm)				Weight each
		C	D	E	F	
FC040110	M10 x 75mm	40	20	12	10	60g
FC090210	M10 x 100mm	40	20	12	10	80g
FC090412	M12 x 100mm	60	25	14	12	120g
FC090516	M16 x 125mm	60	32	17	16	250g
FC090616	M16 x 150mm	75	32	17	16	300g

Order Code  
IND-425  
-2510E  
-2510H  
-2510N  
-2510P  
-2510R

## FC11 - Internal Threaded Dowel



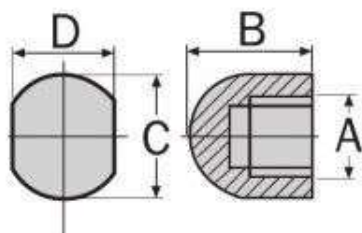
Material: Medium Carbon Steel EN19B.  
Hardness: HRC 55 - 58.



Product Number	Size A (h6) x B	Threaded C	Weight each	
				Order Code
FC110108	8 x 25mm	M4	10g	-2520E
FC110210	10 x 30mm	M5	15g	-2520H
FC110312	12 x 34mm	M6	30g	-2520K

Order Code  
IND-425  
-2520E  
-2520H  
-2520K

## FC15 - Domed Rest Nut



Material: Case Hardened Steel EN19A.  
Hardness: HRC 60.  
Surface finish: Black Oxide.

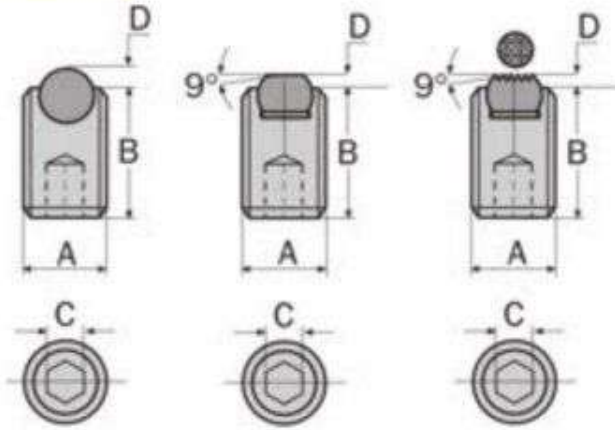


Product Number	Thread A	Dimensions (mm)			Weight each
		B	C	D	
FC150112	M12	20	22	19	42g
FC150216	M16	25	28	24	63g

Order Code  
IND-425  
-2540J  
-2540R

**INDEXA**

**FC16 - Swivel Clamping Screw**



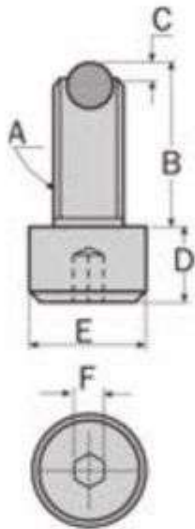
**Material:**  
Body - Medium Carbon Steel EN198.  
Point - Through Hardened Steel EN 31.  
**Hardness:**  
Body - HRC 32 - 38.  
Point - HRC 62.  
**Surface finish:**  
Point - Hardened and Ground.



**Ball Point Dog Point Serrated Point**

Thread x Length A x B	mm C	Weight each	Product Number	Ball Point		Dog Point		Serrated Point	
				mm D	Order Code IND-425	Product Number	mm D	Order Code IND-425	Product Number
M6 x 15mm	3	2.4g	FC160206	1.4	-2610H	-	-	-	-
M6 x 25mm	3	3.8g	FC160306	1.4	-2610N	-	-	-	-
M8 x 12mm	4	3.2g	FC160408	1.9	-2615D	FC162208	0.6	-2645D	-
M8 x 20mm	4	5.8g	FC160508	1.9	-2615H	FC162308	0.6	-2645H	-
M8 x 30mm	4	9.0g	FC160608	1.9	-2615N	-	-	-	-
M10 x 15mm	5	6.7g	FC160710	2.4	-2620D	-	-	-	-
M10 x 25mm	5	11.2g	FC160810	2.4	-2620H	FC162610	0.7	-2650H	-
M10 x 35mm	5	16.2g	-	-	-	FC162710	0.7	-2650N	-
M12 x 30mm	6	20.0g	-	-	-	FC162912	0.9	-2655H	-
M12 x 50mm	6	40.0g	FC161312	2.9	-2625T	-	-	-	-
M16 x 55mm	8	55.0g	-	-	-	FC163516	1.0	-2660R	-
M16 x 65mm	8	65.0g	-	-	-	-	-	-	-
									FC165416 1.0 -2690T

**FC17 - Swivel Shoulder Clamping Screw**



**Material:**  
Body - Medium Carbon Steel EN198.  
Point - Through Hardened Steel EN 31.  
**Hardness:**  
Body - HRC 32 - 38.  
Point - HRC 62.  
**Surface finish:**  
Point - Hardened and Ground.

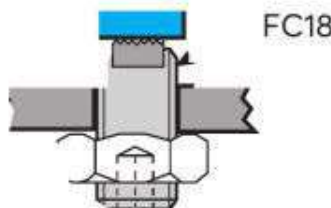
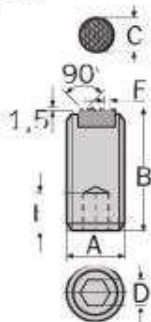


**Ball Point**

Thread x L A x B (mm)	Dimensions			Weight each	Product Number	mm C	Order Code IND-425
	D	E	F				
M8 x 40	8	13	6	24g	FC170608	1.9	-2725N
M12 x 65	12	18	10	70g	FC171212	2.9	-2735N
M16 x 40	16	24	14	90g	FC171416	4.0	-2740D

**FC18 - Grip Point Screw**

Multi-purpose work support and clamping unit, ideal for rough parts.



**Material:** Medium Carbon Steel EN198.  
**Hardness:** HRC 32 - 38.  
Tooth plate HRC 60.  
**Serrated surface:** Induction Hardened.  
**Surface finish:** Black Oxide.

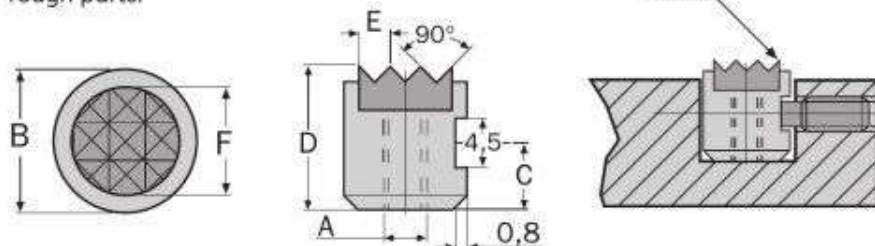


Product Number	Thread x Length A x B	Dimensions (mm)				Weight each	Order Code IND-425
		C	D	E	F		
FC180110	M10 x 25mm	6.5	5	4	2.3	15g	-2825D
FC180616	M16 x 50mm	11.5	8	6	3.0	78g	-2825R



## INDEXA FC21 - Round Grip Pad

Multi-purpose work support and clamping unit, ideal for rough parts.



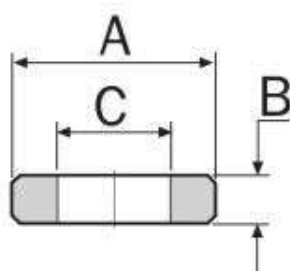
**Material:** Hardened Steel EN16M.  
**Hardness:** HRC 60.  
**Surface finish:** Black Oxide.



Product Number	Thread x Dia A x B	Dimensions (mm)				Weight each	Order Code
		C	D	E	F		
FC210110	M5 x 10mm	3.4	10	2.3	8.1	5g	IND-425 -2840D
FC210212	M6 x 12mm	4.0	12	3.0	9.6	8g	-2840G
FC210525	M6 x 25mm	4.0	12	3.0	19.5	40g	-2840P

## FC22 - Spacer

For use with jig components for increasing height or extending length.

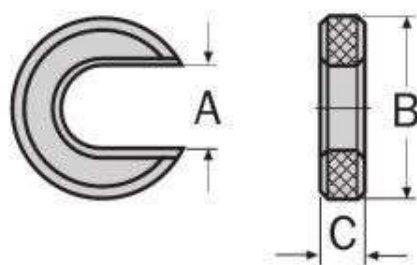


**Material:** Medium Carbon Steel.  
**Hardness:** HRC 40.



Product Number	Dimensions (mm)			Weight each	Order Code
	A	B	C		
FC220616	50	5	17	70g	IND-425 -2845P
FC220716	50	10	17	350g	-2845T

## FC23 - 'C' Washer



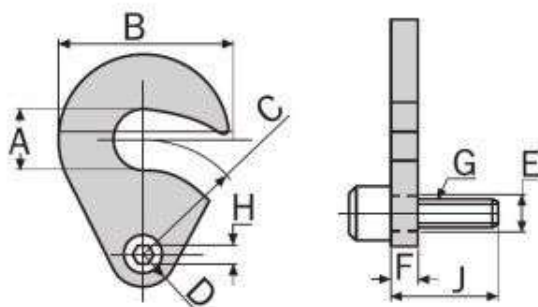
**Material:** Medium Carbon Steel.  
**Hardness:** HRC 40.  
**Surface finish:** Black Oxide.



Product Number	Dimensions (mm)			Weight each	Order Code
	A	B	C		
CC010212	13	55	10	150g	IND-425 -2850G

## FC24 - Swing 'C' Washer

Can be reversed to swing into position either clockwise or counter-clockwise.



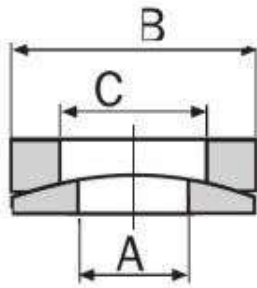
**Material:** Medium Carbon Steel.  
**Hardness:** HRC 40.  
**Surface finish:** Black Oxide.



Product Number	Dimensions (mm)										Weight each	Order Code
	A	B	C	D	E	F	G	H	J			
FC240212	13.5	40	27	20	10	8	M8	10	20	90g	IND-425 -2855G	

**INDEXA** FC25 - Spherical Washer Set

2 piece washer set that compensates whenever a stud and clamping surface are not exactly perpendicular.



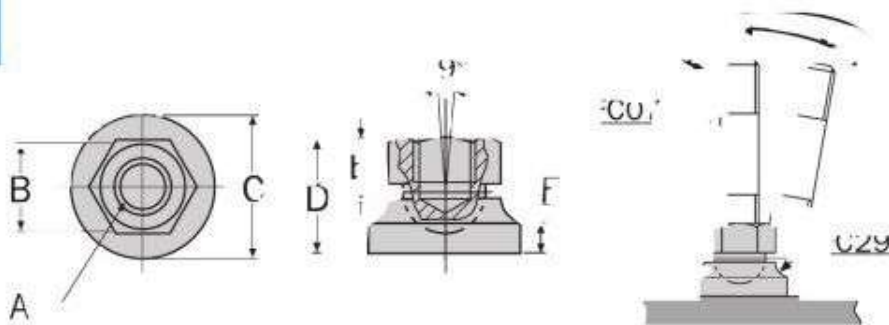
**Material:** Medium Carbon Steel.  
**Hardness:** HRC 38.  
**Surface finish:** Black Oxide.



Product Number	Dimensions (mm)					Weight each	Order Code
	A	B	C	D			
FC250112	13	26	15	7.5		20g	-2860D
FC250216	17	32	19	9.0		30g	-2860G
FC250320	21	40	23	12.0		50g	-2860L

**FC29 - Swivel Foot**

Used for supporting uneven surfaces.

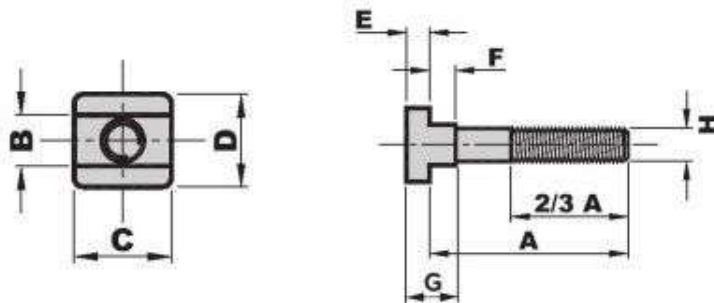


**Material:** Medium Carbon Steel.  
**Hardness:** HRC 32 - 38.  
**Surface finish:** Black Oxide.



Product Number	Size A	Dimensions (mm)					Weight each	Order Code
		B	C	D	E	F		
FC290112	M12	19	35	24	11	7	80g	-2870D
FC290216	M16	24	40	29	13	8	150g	-2870G

**FC40 - T-Slot Bolt**



**Material:** Medium Carbon Steel.  
**Hardness:** HRC 32 - 38.  
**Surface finish:** Black Oxide.

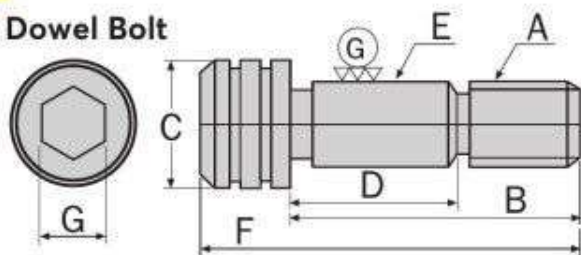


Product Number	A	Dimensions (mm)							Weight each	Order Code
		B	C	D	E	F	G	H		
FC40-1250	50								54g	-2900D
FC40-1275	75								57g	-2900F
FC40-12100	100								110g	-2900H
FC40-12125	125	12	26	22	7	6	13	M12	125g	-2900K
FC40-12150	150								140g	-2900M
FC40-12175	175								170g	-2900P
FC40-12200	200								185g	-2900R
FC40-1650	50								130g	-2910D
FC40-1675	75								160g	-2910F
FC40-16100	100								200g	-2910H
FC40-16125	125	16	32	27	8	8	16	M16	230g	-2910K
FC40-16150	150								270g	-2910M
FC40-16175	175								305g	-2910P
FC40-16200	200								325g	-2910R
FC40-2075	75								290g	-2920F
FC40-20100	100								350g	-2920H
FC40-20125	125								400g	-2920K
FC40-20150	150	20	40	30	11	11	22	M20	455g	-2920M
FC40-20175	175								505g	-2920P
FC40-20200	200								560g	-2920R
FC40-24150	150								775g	-2930M
FC40-24200	200	24	50	44	16	15	31	M24	925g	-2930R



## INDEXA

### FC31 - Ground Dowel Bolt

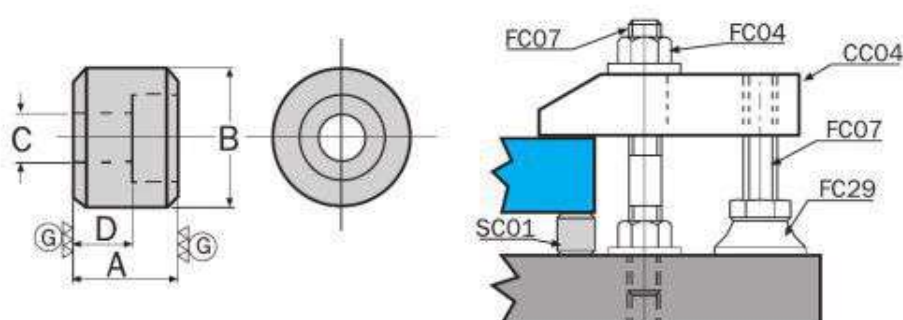


**Material:** Medium Carbon Steel EN19B.  
**Hardness:** HRC 32 - 38.



Product Number	Diameter x Length		Dimensions (mm)				Weight each	Order Code
	A x B	C	D	E	F	G		
FC310212	M12 x 55mm	18	33	∅12	67	10	60g	-2880G
FC310312	M12 x 65mm	18	43	∅12	77	10	70g	-2880J
FC310516	M16 x 55mm	24	30	∅16	72	14	120g	-2880N
FC310716	M16 x 75mm	24	50	∅16	92	14	150g	-2880T

### SC01 - Support Spacer

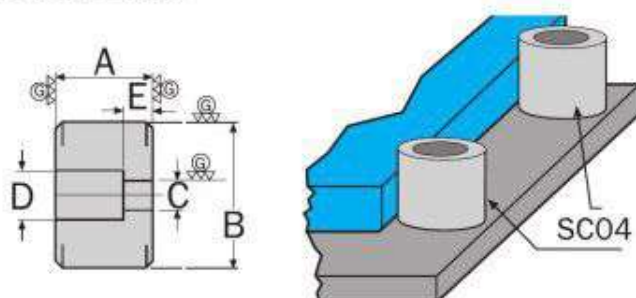


**Material:** Medium Carbon Steel.  
**Hardness:** HRC 40.  
**Surface finish:** Black Oxide.



Product Number	Height x Diameter A (±0.01) x B	Dimensions (mm)		Weight each	Order Code
		C	D		
SC010112	30 x 40mm	M12	17	240g	-3005D

### SC04 - Location Collar

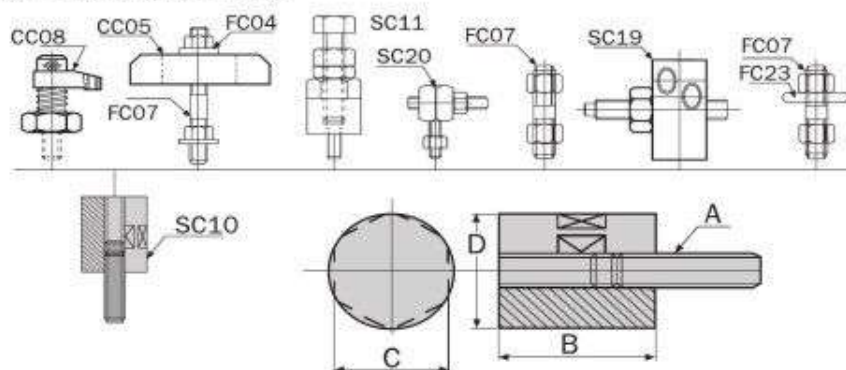


**Material:** Medium Carbon Steel.  
**Hardness:** HRC 40.  
**Surface finish:** Black Oxide.



Product Number	Height x Diameter A (±0.01) x B (±0.01)	Dimensions (mm)			Weight each	Order Code
		C	D	E		
SC040212	40 x 40mm	∅12	∅20	12	320g	-3020F

### SC10 - Extension Pillar

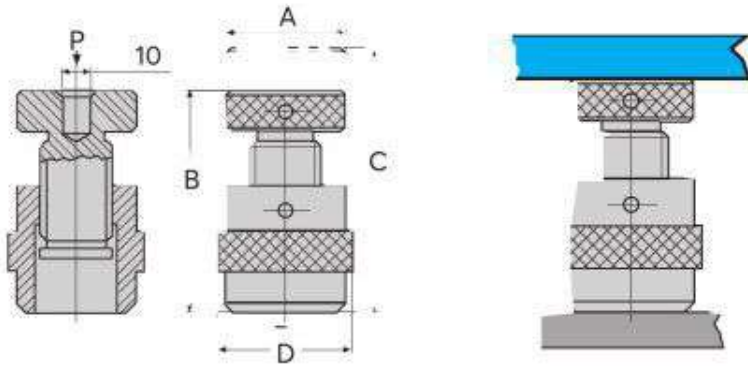


**Material:** Medium Carbon Steel.  
**Hardness:** HRC 40.  
**Surface finish:** Black Oxide.



Product Number	Height x Diameter A x B	Dimensions (mm)		Weight each	Order Code
		C	D		
SC100265	M12 x 65	36	40	540g	-3050F
SC100450	M16 x 50	46	50	820g	-3050J

**INDEXA** SC11A - Screw Jack

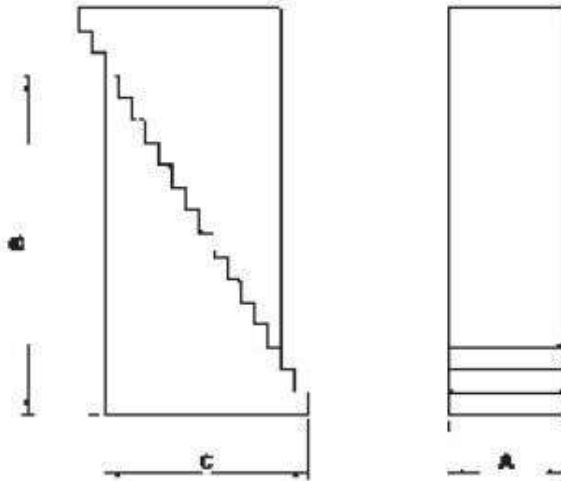


**Material:** Medium Carbon Steel.  
**Hardness:** HRC 40.  
**Surface finish:** Black Oxide.



Product Number	Diameter x Height A x B (Min)	Dimensions (mm)		Holding Load (kN)	Weight each	Order Code
		C	D			
SC20032050	32 x 40mm	60	32	72	230g	IND-425 -3057D
SC20070140	65 x 100mm	150	70	135	274g	-3057P

**SU25 - Step Block**

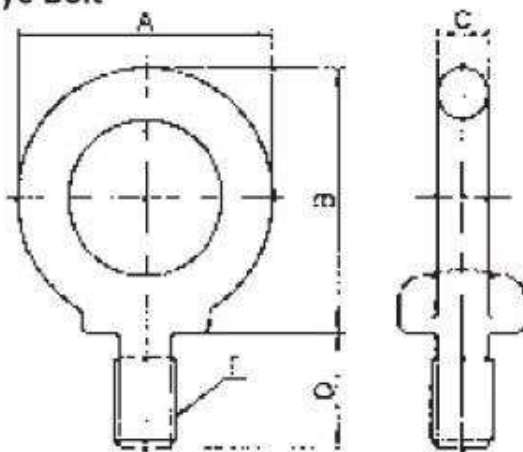


**Material:** Medium Carbon Steel.  
**Hardness:** HRC 32 - 36.  
**Surface finish:** Black Oxide.



Product Number	Supporting Height	Dimensions (mm)			Weight each	Order Code
		A	B	C		
SU252530	19 - 49	25	29	17	0.05kg	-3125E
SU252545	28 - 68		45	27	0.12kg	-3125H
SU252597	58 - 150		97.5	57	0.50kg	-3125L
SU253259	38 - 90	32	59	35	0.24kg	-3132J
SU253297	58 - 150		97.5	57	0.62kg	-3132L
SU2532139	82 - 210		139	81	1.32kg	-3132P

**SEB - Shoulder Eye Bolt**



Product Number	Thread (E)	Dimensions (mm)				Load	Weight each	Order Code
		A	B	C	D			
SEB1017	M10	41	41.5	8	18	150kg	0.063kg	IND-425 -3210S
SEB1220	M12	50	51	10	22	220kg	0.125kg	-3212S
SEB1525	M16	60	60	12.5	27	450kg	0.216kg	-3216S
SEB2030	M20	72	71	16	30	630kg	0.4kg	-3220S



## INDEXA Indexa T-Slot Clamping Kits

Designed to save set up time and solve most T-Slot clamping problems. All components are manufactured from S45C (JIS)/CK45 (DIN) grade non-alloy carbon steel, heat treated to HRC 28 - 32 and have a manganese phosphate surface finish. Supplied in a robust plastic case.

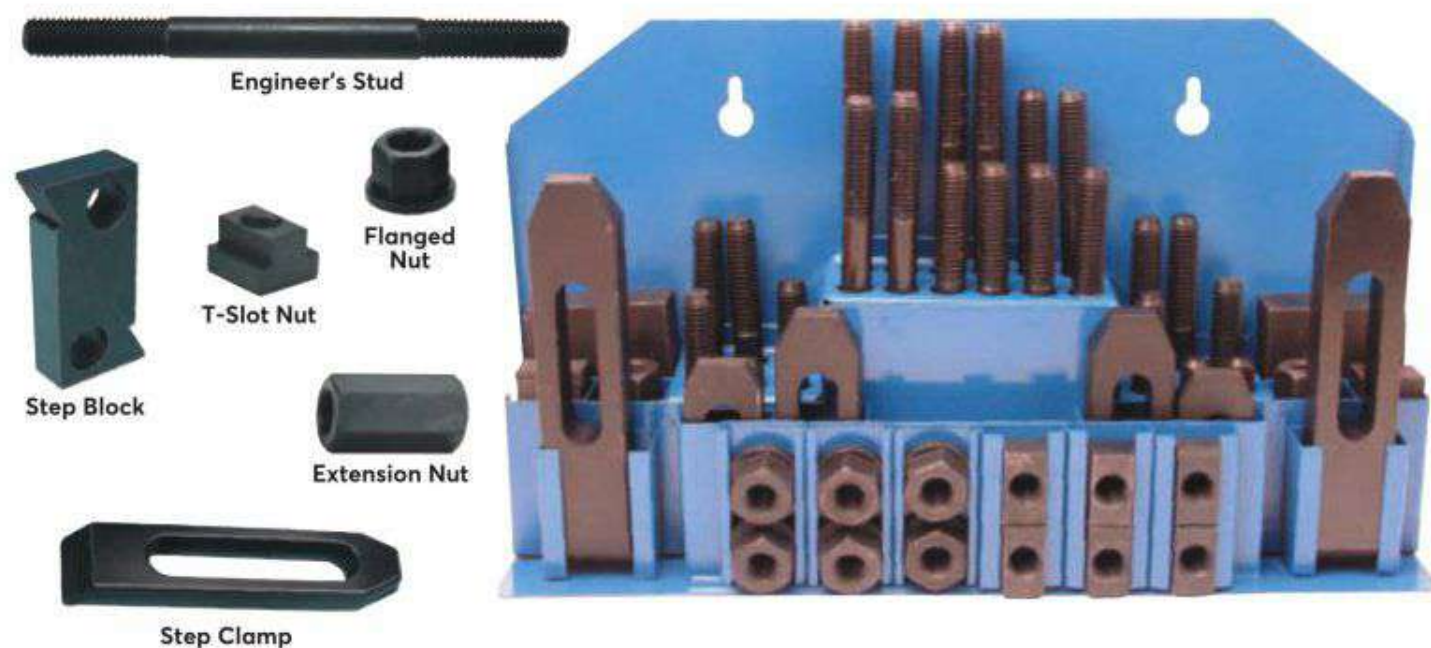


T-Slot Size	Thread Size	Part Number	Weight each	Order Code
12mm	M10	TK10	9kg	-3610T
14mm	M12	TK12	10kg	-3612T
16mm	M14	TK14	11kg	-3614T
18mm	M16	TK16	14kg	-3616T

**ATLAS**  
WORKHOLDERS

## T-Slot Steel Clamping Sets

Designed to save set up time and solve most clamping problems. Manufactured to high standards. All step clamps are forged and hardened and the step blocks are made from high quality steel. All components (other than the studs) are heat treated and finished in black oxide. Available to suit a full range of metric and imperial T-Slot widths. Supplied in steel racks which can be wall mounted or fitted to workbenches for ease of storage (except M16 set which is supplied in wooden box).



### 58 Pieces Metric Sets (Quantity of each component part given in brackets)

Product Number	T-Slot Nut Size x W x L (mm)	Thread Size	Weight each	Order Code
CK120100	12 x 18 x 14	M10	10kg	-1120K
CK140120	14 x 22 x 16	M12	12kg	-1140K
CK160140	16 x 25 x 18	M14	12kg	-1160K
CK180140	18 x 25 x 18	M14	12kg	-1180K
CK200160	20 x 28 x 20	M16	14kg	-1200K

### 58 Pieces Inch Sets (Quantity of each component part given in brackets)

Product Number	T-Slot Nut Size x W x L (mm)	Thread Size	Weight each	Order Code
CK500375	1/2" x 1 1/8" x 1 1/32"	3/8" UNC	10kg	-1320K
CK62500	9/16" x 7/8" x 4/8"	1/2" UNC	12kg	-1360K
CK62550	5/8" x 7/8" x 5/8"	1/2" UNC	12kg	-1400K
CK750625	3/4" x 1 3/8" x 1 1/8"	5/8" UNC	12kg	-1480K