

## INDEXA Lathe Chuck Jaws For Self-Centring Lathe Chucks

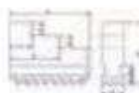
For self-centring lathe chucks (IND-475) - Indexa 3200 and 3500. Chuck jaws supplied in sets of three.

### Hard Jaws

Fig.1



Fig.2



Size (mm)	Dimensions (mm)								Order Code IND-490	
	A	B	C	D	E	F	G	H	Outside (fig.1)	Inside (fig.2)
100	42	15	32	6	6	7	11	27	-1220K	-
125	51	20	40	8	8	8	13	33.5	-1230K	-1030K
250	105	28	63	11	12	14	28	69.5	-1270K	-1070K
315	125	32	73	12.7	12	18	34.5	83	-1280K	-1080K

## INDEXA Industrial Lathe Carriers

Available with straight or bent tail. Manufactured from high grade, malleable cast iron with high tensile strength. Smooth action square head clamping screw.

### Straight



Type	Capacity	Weight each	Order Code IND-445
Straight	12.5mm	0.10kg	-9000K
	19.0mm	0.15kg	-9010K
	25.0mm	0.30kg	-9020K
	38.0mm	0.70kg	-9040K
	50.0mm	1.50kg	-9060K

### Bent



Type	Capacity	Weight each	Order Code IND-445
Bent	12.5mm	0.10kg	-9200K
	38.0mm	0.70kg	-9240K
	50.0mm	1.50kg	-9260K

## INDEXA Self-Centring Geared Scroll Lathe Chucks

Universal. Scrolls are forged, balanced and hardened. Thread flanks are ground on both sides. All models have grease nipples for easy lubrication and are supplied with two sets of solid jaws - internal and external stepped.

### Cast Iron 3 Jaw Plain Back Chuck DIN 6350 (form A).

Three jaw plain back with adaptor recess.

Model 003-204

Rear mounting.

Model 003-274

Front mounting.



Chuck Size (mm)	Through Hole	Weight each	Order Code IND-475	
			003-204 Rear Mount	003-274 Front Mount
80	16	1.51kg	-1010K	-
100	20	2.98kg	-1030K	-1230K
125	32	4.84kg	-1040K	-1240K
160	42	9.78kg	-1060K	-1260K
200	55	16.0kg	-1070K	-1270K
250	76	27.9kg	-1080K	-1280K
315	103	47.5kg	-1090K	-1290K

### Cast Iron 3 Jaw Plain Back Chuck DIN 6350 (form A).

Three jaw plain back with adaptor recess.

Model 003-275

Front mounting, reversible jaws.



Chuck Size (mm)	Through Hole	Weight each	Order Code IND-475
125	32	5.0kg	-1450K
160	42	10.8kg	-1460K
200	55	17.5kg	-1470K
250	76	29.2kg	-1480K
315	103	50.0kg	-1490K

### Steel 3 Jaw Plain Back Chuck DIN 6350 (form A).

Three jaw plain back with adaptor recess.

Model 003-504

Rear mounting.



Chuck Size (mm)	Through Hole	Weight each	Order Code IND-475
100	20	3.0kg	-1630K
125	35	5.0kg	-1640K
160	42	8.5kg	-1660K
200	55	16.0kg	-1670K
250	76	32.0kg	-1680K
315	103	50.0kg	-1690K

## Independent Jaw Lathe Chucks

### Cast Iron 4 Jaw Plain Back Chuck Type 004-304

Front mounted. Independently adjustable jaws. Allows firm gripping of irregular shaped work and the four jaws allow a square component to be perfectly centred to the chuck while achieving maximum gripping force.

Steel body (sizes 85 - 160mm)

or high quality cast iron

(sizes 200 - 800mm).

Carbon steel hardened

jaws. Supplied with

reversible solid jaws.

With T-Slots. DIN 6531.



### Chuck Jaws available on request

Chuck Size (mm)	Through Hole	Weight each	Order Code IND-475
200	50	14kg	-5050K
250	65	25kg	-5060K
315	80	39kg	-5070K