

**ENERPAC** 

# Hexagon Cassette Torque Wrench



**ENERPAC**<sup>®</sup>  
INDUSTRIAL TOOLS



## Lightweight, Low Profile and Slim Nose Radius

The new HXD-240 extends Enerpac's torque wrench line with torque capacity up to 24210 Nm and hexagon sizes up to 130 mm (5 inch).

# Hexagon Cassette Torque Wrenches

▼ Shown: HXD-240 with CC-24463



## Lightweight, Low Profile and Slim Nose Radius



### Twin 3,5:1 Safety Hoses

Use only Enerpac THC-700 series twin 3,5:1 safety hoses with HXD double-acting wrenches to ensure the integrity of your system.



### Select the Right Torque

Choose your Enerpac Torque Wrench using the untightening rule of thumb: Loosening torque equals about 150% of tightening torque.



### Optimum Torque Wrench and Pump combinations

For optimum speed and performance Enerpac recommends the following

wrench and pump combination:

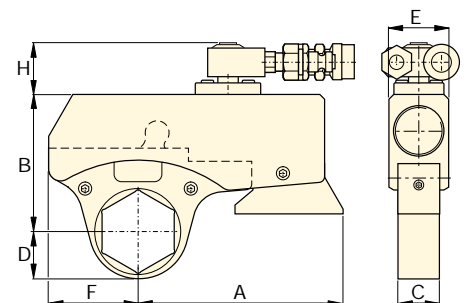
PTE-3404W: HXD-120, -240

PMA-62480: HXD-120, -240

PMU-10422: all HXD-models

PME-18453EP98: all HXD-models

- High torque-to-weight ratio, slim nose radius and flat design
- High speed, high degree of rotation angle, double-acting
- Snap in, interchangeable cassettes, no tools required
- 360° swivel hose connection allows easier positioning in confined areas
- High repeatability, with accuracy  $\pm 3\%$
- Strong unibody design, integrated reaction arm and few moving parts make wrenches durable and reliable
- Extensive range of metric and imperial hexagon cassettes and reducers
- Fully corrosion resistant material
- Drive unit and cassette come in storage case to protects from damage, water and dirt



Drive Unit with Cassette

### ▼ QUICK SELECTION CHART

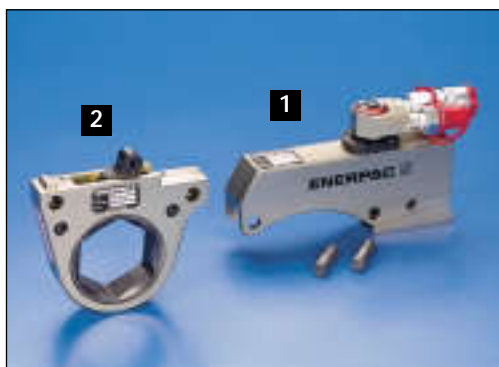
Hexagon Range <sup>1)</sup>	Maximum Torque at 800 bar	Drive Unit * Model Number	Drive Unit and Cassette Dimensions								Weight (drive unit only)
			(mm)								
(mm)	(inch)	(Nm)	A	B	C	D	E	F	H	(kg)	
65-130	2 <sup>9</sup> / <sub>16</sub> - 5	24.210	HXD-240	259	182-202	56	62-96	82	125	50	8,2

<sup>1)</sup> With Cassette and Reducer Insert combination.

\* With integrated reaction arm.

# Hexagon Cassettes and Inserts

▼ Shown from left to right: CC-24463, HXD-240



## TORQUE WRENCH SELECTION IN 2 STEPS:

- 1 DRIVE UNIT**  
Select the HXD-Drive Unit using the quick selection chart below.
- 2 CASSETTE**  
Select the appropriate CC-Cassette.

**CC  
IN  
HR  
Series**




Maximum Torque at 800 bar:

**24.210 Nm**


Hexagon Range:

**65 - 130 mm**

## ▼ METRIC SELECTION CHART

DRIVE UNIT 	INTERCHANGEABLE CASSETTES, METRIC					OPTIONAL ADD-ON REDUCER INSERTS, METRIC						HOLDING RINGS
	Max. <sup>1)</sup> Torque (Nm)	Hex. Size (Nm)	Nose Radius D (mm)	Model Number	Weight (kg)	Hexagon Size (mm)	Model Number	Hexagon Size (mm)	Model Number	Hexagon Size (mm)	Model Number	Model Number
HXD-240 (24.210 Nm)	13.890	80	62,0	CC-2480	5,1	80/75	IN24-8075	80/70	IN24-8070	80/65	IN24-8065	HR-80
	16.030	85	66,0	CC-2485	5,2	85/80	IN24-8580	85/75	IN24-8575	85/70	IN24-8570	HR-85
	16.560	90	69,0	CC-2490	5,2	90/85	IN24-9085	90/80	IN24-9080	90/75	IN24-9075	HR-90
	17.100	95	72,0	CC-2495	5,4	95/80	IN24-9580	95/85	IN24-9585	95/80	IN24-9580	HR-95
	18.170	100	76,0	CC-24100	5,6	100/95	IN24-10095	100/90	IN24-10090	100/85	IN24-10085	HR-100
	20.840	105	80,0	CC-24105	5,7	105/100	IN24-105100	105/95	IN24-10595	105/90	IN24-10590	HR-105
	24.210	110	84,0	CC-24110	5,8	110/105	IN24-110105	110/100	IN24-110100	110/95	IN24-11095	HR-110
	24.210	115	87,0	CC-24115	7,1	115/110	IN24-115110	115/105	IN24-115105	115/100	IN24-115100	HR-115
	24.210	120	90,0	CC-24120	7,3	120/115	IN24-120115	120/110	IN24-120110	120/105	IN24-120105	HR-120
	24.210	125	93,0	CC-24125	7,3	125/120	IN24-125120	125/115	IN24-125115	125/110	IN24-125110	HR-125
	24.210	130	96,0	CC-24130	7,4	130/125	IN24-130125	130/120	IN24-130120	130/115	IN24-130115	HR-130

## ▼ IMPERIAL SELECTION CHART

DRIVE UNIT 	INTERCHANGEABLE CASSETTE, IMPERIAL					OPTIONAL ADD-ON REDUCER INSERTS, IMPERIAL				HOLDING RINGS
	Max. <sup>1)</sup> Torque (Nm)	Hex. Size (inch)	Nose Radius D (mm)	Model Number	Weight (kg)	Hexagon Size (inch)	Model Number	Hexagon Size (inch)	Model Number	Model Number
HXD-240 (24.210 Nm)	14.000	3 <sup>1</sup> / <sub>8</sub> "	62,0	CC-24313 <sup>2)</sup>	5,1	3 <sup>1</sup> / <sub>8</sub> " - 2 <sup>15</sup> / <sub>16</sub> "	IN24313-293	3 <sup>1</sup> / <sub>8</sub> " - 2 <sup>3</sup> / <sub>4</sub> "	IN24313-275 <sup>2)</sup>	HR-80
	15.840	3 <sup>3</sup> / <sub>8</sub> "	66,0	CC-24338	5,2	3 <sup>3</sup> / <sub>8</sub> " - 3 <sup>1</sup> / <sub>8</sub> "	IN24338-313	3 <sup>3</sup> / <sub>8</sub> " - 3"	IN24338-300	HR-85
	16.570	3 <sup>1</sup> / <sub>2</sub> "	69,0	CC-24350	5,2	3 <sup>1</sup> / <sub>2</sub> " - 3 <sup>1</sup> / <sub>8</sub> "	IN24350-313	3 <sup>1</sup> / <sub>2</sub> " - 3"	IN24350-300	HR-90
	17.320	3 <sup>3</sup> / <sub>4</sub> "	72,0	CC-24375	5,4	3 <sup>3</sup> / <sub>4</sub> " - 3 <sup>1</sup> / <sub>2</sub> "	IN24375-350	3 <sup>3</sup> / <sub>4</sub> " - 3 <sup>3</sup> / <sub>8</sub> "	IN24375-338	HR-95
	18.050	3 <sup>7</sup> / <sub>8</sub> "	76,0	CC-24388 <sup>3)</sup>	5,6	3 <sup>7</sup> / <sub>8</sub> " - 3 <sup>1</sup> / <sub>2</sub> "	IN24388-350	3 <sup>7</sup> / <sub>8</sub> " - 3 <sup>3</sup> / <sub>8</sub> "	IN24388-338 <sup>3)</sup>	HR-100
	21.000	4 <sup>1</sup> / <sub>8</sub> "	80,0	CC-24413	5,7	4 <sup>1</sup> / <sub>8</sub> " - 3 <sup>7</sup> / <sub>8</sub> "	IN24413-388	4 <sup>1</sup> / <sub>8</sub> " - 3 <sup>3</sup> / <sub>4</sub> "	IN24413-375	HR-105
	24.210	4 <sup>1</sup> / <sub>4</sub> "	84,0	CC-24425	6,8	4 <sup>1</sup> / <sub>4</sub> " - 3 <sup>7</sup> / <sub>8</sub> "	IN24425-388	4 <sup>1</sup> / <sub>4</sub> " - 3 <sup>3</sup> / <sub>4</sub> "	IN24425-375	HR-110
	24.210	4 <sup>5</sup> / <sub>8</sub> "	90,0	CC-24463	7,3	4 <sup>5</sup> / <sub>8</sub> " - 4 <sup>1</sup> / <sub>4</sub> "	IN24463-425	4 <sup>5</sup> / <sub>8</sub> " - 4 <sup>1</sup> / <sub>8</sub> "	IN24463-413	HR-120
	24.210	5"	96,0	CC-24500	7,4	5" - 4 <sup>5</sup> / <sub>8</sub> "	IN24500-463	5" - 4 <sup>1</sup> / <sub>4</sub> "	IN24500-425	HR-130

<sup>1)</sup> Determine maximum torque according to the bolt (nut) size and grade.

<sup>2)</sup> Additional imperial Reducer Insert is 3<sup>1</sup>/<sub>8</sub>" - 2<sup>9</sup>/<sub>16</sub>" IN24313-256 fits CC-24313 Cassette, use HR-80 Holding Ring.

<sup>3)</sup> Additional imperial Reducer Insert is 3<sup>3</sup>/<sub>4</sub>" - 2<sup>9</sup>/<sub>16</sub>" IN24375-313 fits CC-24388 Cassette, use HR-100 Holding Ring.

# Hexagon Cassette Torque Wrench



## Enerpac Worldwide Locations

**Internet:**  
www.enerpac.com  
**e-mail:**  
info@enerpac.com

**Australia**  
Tel: +61 297 438 988  
Fax: +61 297 438 648

**China**  
Tel: +86 21 5866 9099  
Fax: +86 21 5866 7156

**France, Turkey, Greece,  
Africa, Middle East**  
Tel: +33 01 601 368 68  
Fax: +33 01 692 037 50

**Germany, Switzerland,  
Austria, Eastern Europe**  
Tel: +49 211 471 490  
Fax: +49 211 471 49 28

**The Netherlands, Belgium,  
Luxembourg, Sweden,  
Denmark, Norway, Finland**  
Tel: +31 318 535 911  
Fax: +31 318 525 613  
+31 318 535 848

**Hong Kong**  
Tel: +852-2561 6295  
Fax: +852-2561 6772

**India**  
Tel: +91 22 769 47 78  
Fax: +91 22 769 84 73

**Italy**  
Tel: +39 2 486 111 00  
Fax: +39 2 486 012 88

**Japan**  
Tel: +81 48 430 2311  
Fax: +81 48 430 1117

**Mexico**  
Tel: +52 771 337 00  
Fax: +52 771 838 00

**Singapore**  
Tel: +65 454 51 08  
Fax: +65 454 56 69

**South Korea**  
Tel: +82 32 675 08 36  
Fax: +82 32 675 30 02/73

**Spain, Portugal**  
Tel: +34 91 661 11 25  
Fax: +34 91 661 47 89

**United Kingdom, Ireland**  
Tel: +44 01 527 598 900  
Fax: +44 01 527 585 500

**USA, Canada, Latin America  
and Caribbean**  
Tel: +1 262 781 66 00  
Fax: +1 262 781 10 49

**User inquiries:**  
+1 800 433 2766  
**Distributor inquiries/orders:**  
+1 800 558 0530

**Canada**  
**User Inquiries:**  
+1 800 268 4987  
**Distributor inquiries/orders:**  
+1 800 426 2456

**ENERPAC**

## More Enerpac tools for bolting applications:

- ATM series, Alignment Tools, rectifying twist and rotational alignment without additional stress in pipelines.
- FSM and FSH series, Wedge Spreaders with low friction, smooth and parallel wedge movement for spreading of flanges
- PTE series, Portable Electric Torque Wrench Pump two stage pump for high working speeds.
- SQD and HXD series, Hydraulic Torque Wrenches for loosening and tightening of bolts.
- NC series, Hydraulic Nut Cutters for trouble-free splitting of frozen nuts.

▼ *Two Enerpac hydraulic wedge spreaders used simultaneously with Enerpac handpump, hoses and split-flow manifold.*



*Your Enerpac Distributor:*