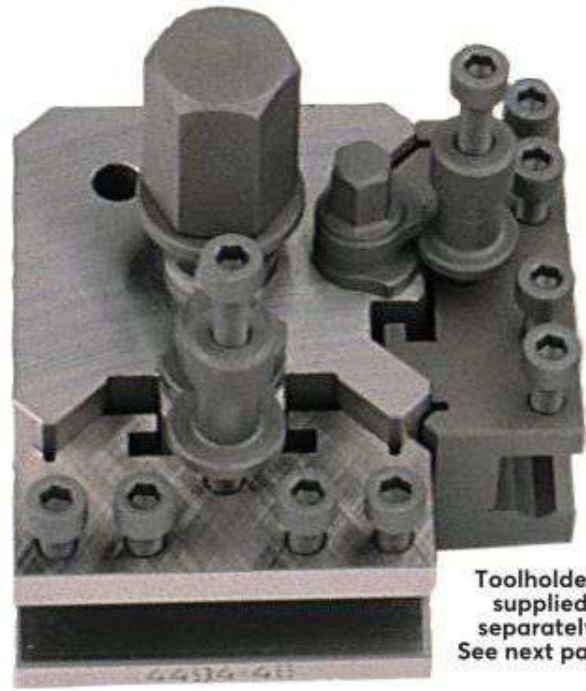
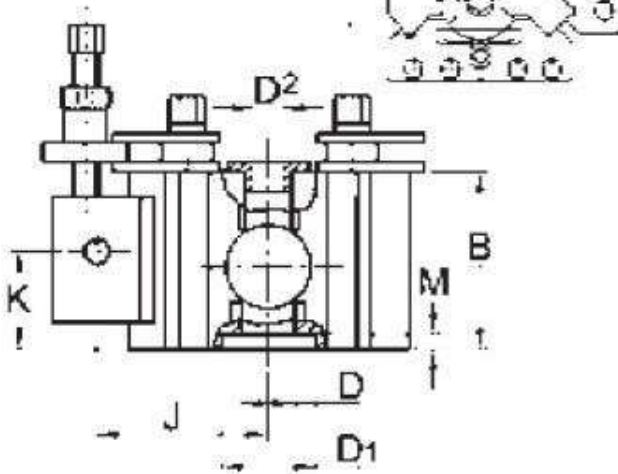


INDEXA Quick Change Toolposts

Made of alloy case steel. All working surfaces are hardened and precision ground.

Toolposts Type T.00 - T.0

Set-up for 2 Toolholders



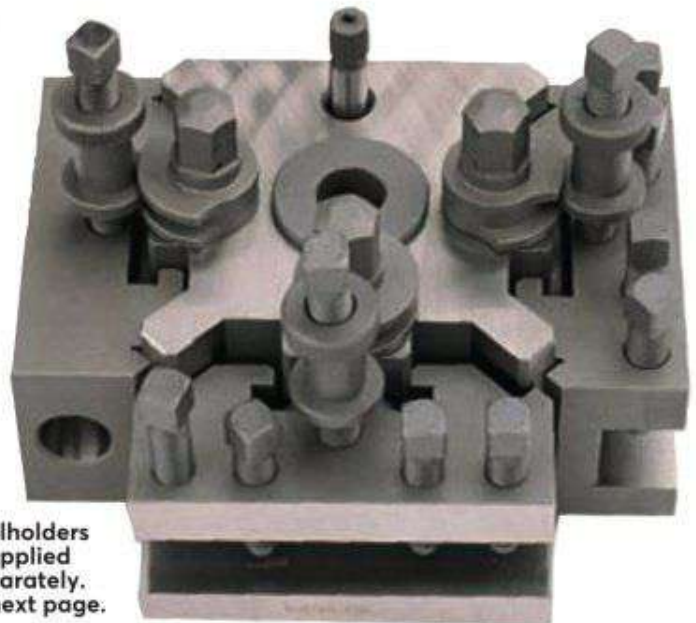
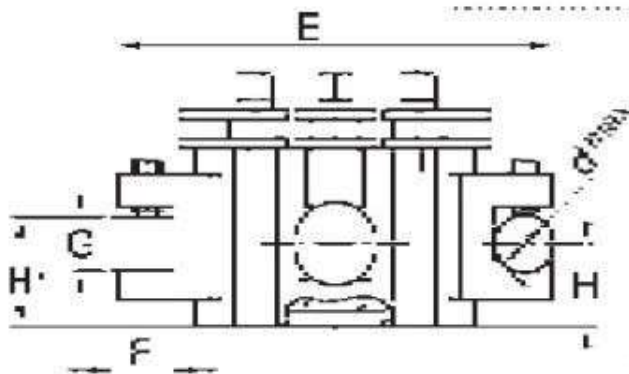
Toolholders supplied separately. See next page.

Type	No. of Toolholders	Lathe Capacity	B	D ₁ Dia.	M Depth	D	E	G	F	H ₁ Max	H ₁ Min.
T.00M	2	Up to 89mm	37.0	-	-	11.2	-	10	11	27	17
T.00B	2	Up to 89mm	42.0	-	-	16.0	-	10	11	32	17
T.0	3	Up to 114mm	51.0	22.22	5.0	19.0	124	13	13	36.5	20.5

Type	Bar dia. d Max.	H Max.	H Min.	Taper	J	K Max.	K Min.	L	D ₂	Weight each	Order Code IND-445
T.00M	11.0	22.5	12.5	-	-	-	-	58.0	-	0.90kg	-4800K
T.0	16.0	32.0	16.0	1	52.5	28.5	16.0	73.0	16.0	2.00kg	-4820K

Toolposts Type T.1 - T.3

Set-up for 3 Toolholders



Toolholders supplied separately. See next page.

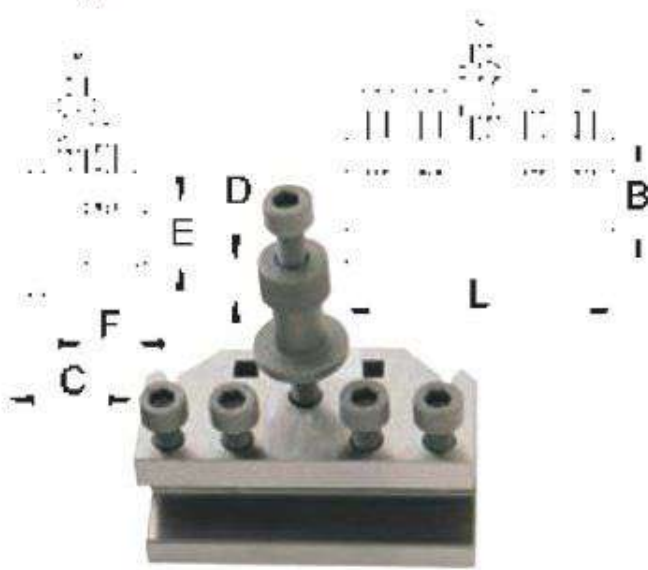
Type	No. of Toolholders	Lathe Capacity	B	D ₁ Dia.	M Depth	D	E	G	F	H ₁ Max	H ₁ Min.
T.1	3	114 to 127mm	63.5	31.75	6.5	19.0	124	19	13	46	30
T.1X	3	114 to 127mm	73.0	31.75	6.5	19.0	124	19	13	57	35
T.2	3	127 to 203mm	71.5	44.45	8.0	25.5	159	19	19	54	36.5
T.2T	3	127 to 203mm	76.0	44.45	8.0	25.5	168	25.5	25.5	58.5	39.5
T.3	3	203 to 292mm	92.0	50.80	9.5	25.5	203	31.5	22.5	73	51

Type	Bar dia. d Max.	H Max.	H Min.	Taper	J	K Max.	K Min.	L	D ₂	Weight each	Order Code IND-445
T.1	16.0	44.5	25.5	1	52.5	41.0	22.0	73.0	16.0	2.30kg	-4830K
T.2	19.0	46.0	24.0	2	65.0	47.5	27.0	98.5	16.0	4.60kg	-4850K
T.2T	19.0	50.0	24.0	2 & 3	70.0	47.5	27.0	106.5	16.0	5.80kg	-4860K
T.3	25.5	51.0	28.5	3	85.5	58.5	36.5	125.5	22.0	10.8kg	-4870K

INDEXA

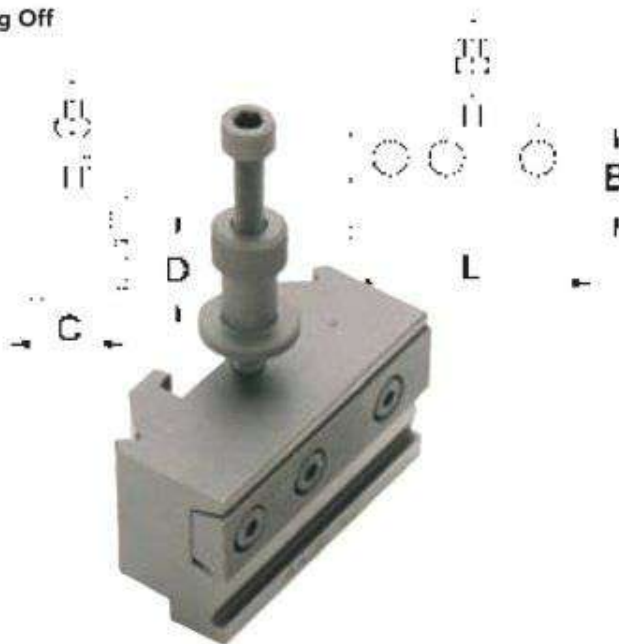
Toolholders for Quick Change Toolposts

Standard Type



Used On	L (mm)	B	C	D	E	F	Order Code IND-445
T.00	58.0	27.0	28.0	7.0	13.0	11	-5010K
T.0	73.0	35.0	32.0	8.0	16.0	14	-5020K
T.1	73.0	44.5	32.0	11.0	22.0	14	-5030K
T.2	98.5	50.0	40.0	12.0	22.0	19	-5040K
T.2T	98.5	57.0	40.0	14.0	28.5	19	-5050K
T.3	124.0	70.0	48.5	17.5	35.0	23	-5060K

Parting Off Type



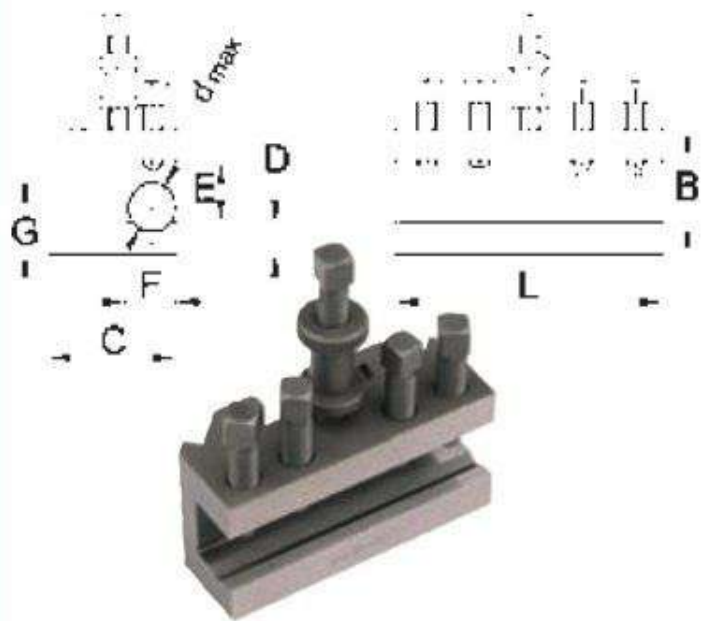
Used On	L (mm)	B	C	D	Order Code IND-445
T.0/T.1	73.0	47.5	32.0	27.0	-5370K
T.2	98.5	57.0	39.5	33.5	-5380K
T.3	124.0	70.0	48.5	39.5	-5390K

INDEXA-SEIKI Tool Blocks

For use on manual and CNC lathes, this universal style tool block will accurately clamp all parting blades of the corresponding width, 26mm or 32mm. The rigid clamping method allows blades to be set securely for varying depths of cut.

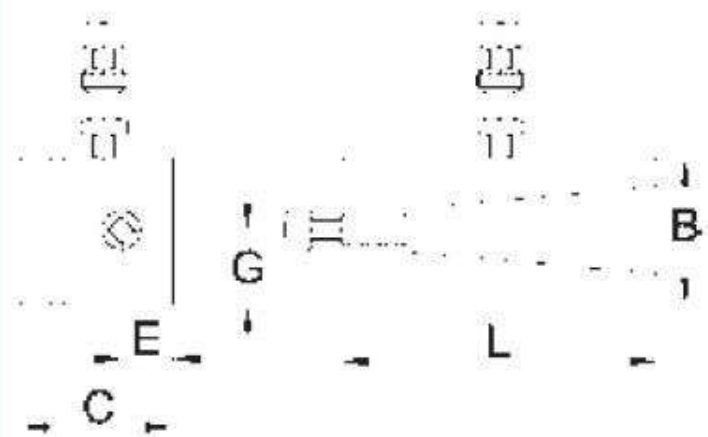
Product Number	For Blade Size	Shank Height	Order Code IND-152
DPTS-2620	26	20	-1160K
DPTS-2625	26	25	-1162K
DPTS-3220	32	20	-1170K
DPTS-3225	32	25	-1172K
DPTS-3232	32	32	-1174K

Vee Type



Used On	L (mm)	B	C	D	E	F	G	d Max	Order Code IND-445
T.00	58.0	27.0	28.0	8.0	13.0	11	13.5	11.0	-5110K
T.0	73.0	35.0	32.0	8.0	16.0	14	16.0	16.0	-5120K
T.1	73.0	44.5	32.0	16.0	17.0	14	24.0	16.0	-5130K
T.2	98.5	50.0	40.0	14.0	22.0	19	24.0	19.0	-5140K
T.2T	98.5	57.0	40.0	14.0	28.5	19	24.0	19.0	-5150K
T.3	124.0	70.0	48.5	17.5	35.0	23	28.5	25.5	-5160K

Morse Taper Type



Used On	L (mm)	B	C	E	G	Morse Taper	Order Code IND-445
T.1	73.0	44.5	31.5	9.5	22	1MT	-5220K
T.1	95.0	44.5	41.5	16.5	22	2MT	-5230K
T.2	98.5	50.0	40.0	14.0	22	2MT	-5240K
T.3	124.0	70.0	49.0	16.5	35	3MT	-5260K



Compatible with
Self-Grip 'SGFH'
Do-Grip 'DGFH'
Tang-Grip 'TGFH'